



## IMAGES

## Quake Surfing

Seismic waves from the magnitude-5.0 Big Bear earthquake rippled toward Los Angeles on the morning of 22 February 2003 (above). Now you can screen movies showing the pattern of ground shaking, thanks to this new site from the California Institute of Technology in Pasadena. ShakeMovie's animations, which usually post about 45 minutes after a temblor, indicate the amount of up-and-down motion at the surface. The movies depict all southern California quakes of magnitude 3.5 and above and reflect computer simulations that integrate readings from thousands of seismograms. Visitors can also download maps that chart peak ground acceleration during the event. For movies of quakes dating back to 1999, visit the site's archive. >> [shakemovie.caltech.edu](http://shakemovie.caltech.edu)

## EDUCATION

## Clicking for Better Health

Supercourse caches more than 2600 free lectures on public health and disease prevention. Tended by epidemiologist Ronald LaPorte of the University of Pittsburgh in Pennsylvania and colleagues, the collection provides researchers with a starting point for their own talks and supplies instructors around the world with current information. Visitors can cue up slide shows by bigwigs such as Leland Hartwell of the Fred Hutchinson Cancer Research Center in Seattle, Washington, who shared the 2001 Nobel Prize in physiology or medicine, and Elias Zerhouni, director of the U.S. National Institutes of Health. >> [www.pitt.edu/~super1](http://www.pitt.edu/~super1)



## TOOLS

## Perpetual Peer Review

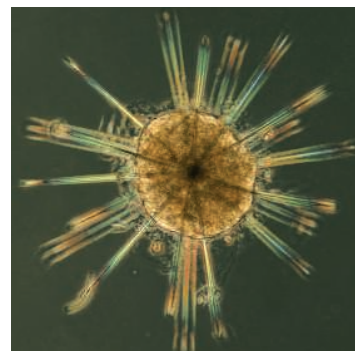
Logging on to BioWizard is like joining a worldwide journal club. Founded by grad students and med students at two universities, the new portal lets users post comments about any PubMed entry. Visitors rank articles, helping you track down the top work in a particular field. You can also voice your opinion in one of the forums or post your profile in the LabWizard section, a meeting place for researchers. >> [www.biowizard.com](http://www.biowizard.com)

## EDUCATION

## Livin' Small

Looking for information on microbe ecology and evolution? Browse this site from experts at the Marine Biology Laboratory in Woods Hole, Massachusetts, and Montana State University, Bozeman.

Aimed at everyone from high-school students to scientists, the tutorials and other resources focus on microbes that dwell in the ocean and extreme environments. Fans of the so-called extremophiles will find background pages that profile the microscopic residents of glacial lakes, acidic mine drainage, and other hardcore habitats. Case studies let you delve into specific projects on the bugs. One lets you follow a team as it tracks down viruses that attack some of the bacterial residents of Yellowstone's hot springs and thermal pools. >> [serc.carleton.edu/microbelife](http://serc.carleton.edu/microbelife)



## WEBCAST

## Reading the Subtext

Sometimes it takes a magnifying glass to decipher an ancient text, and sometimes it takes a linear accelerator. During a live Webcast\* from the Exploratorium in San Francisco, California, scholars will fire up an atom smasher to expose concealed writings by the Greek mathematician Archimedes (287–212 B.C.E.).

Known as the Archimedes Palimpsest, the manuscript in question contains the only known copy of one of the great thinker's treatises. But it has taken a beating. Medieval monks reused the pages, and a collector further defaced the work by adding paintings (left). Applying techniques such as multispectral imaging, researchers have uncovered much of the original text, but some remains unreadable. For the Webcast, experts will train a powerful x-ray beam from the Stanford Linear Accelerator Center on a previously hidden section of the manuscript, causing the underlying ink to fluoresce. A Greek scholar and other Archimedean will decipher the glowing writing and discuss its significance. The event begins at 7 p.m. U.S. Eastern Time on 4 August. To learn more about the palimpsest, hop over to this site† from the Walters Art Museum in Baltimore, Maryland. >>

\* [www.exploratorium.edu/archimedes](http://www.exploratorium.edu/archimedes)

† [www.archimedespalimpsest.org](http://www.archimedespalimpsest.org)

Send site suggestions to >> [netwatch@aaas.org](mailto:netwatch@aaas.org)

Archive: [www.sciencemag.org/netwatch](http://www.sciencemag.org/netwatch)